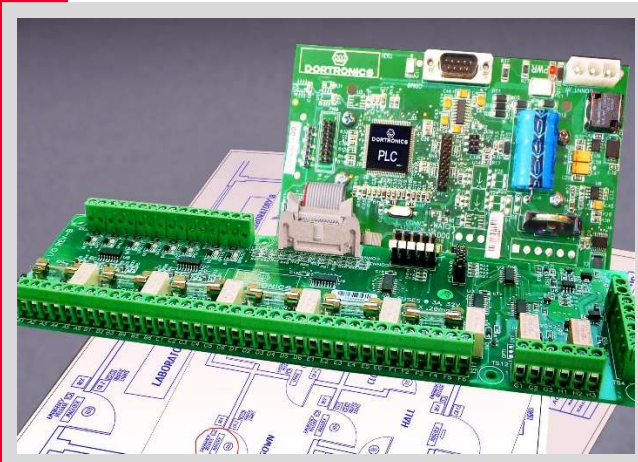


4900 Series Interlock

Multi-Door Controller Intelligent PLC Interlock Solution



Features:

Interlocking for up to 100 Doors

Custom Timing & Sequencing

Door Status Input

Normally Open R-E-X Inputs

Fused Lock Outputs

Traffic Light

Control Outputs

Total Control & Flexibility

The 4900 series Interlock Controllers can provide power and control for up to 100 doors. The PLC logic allows only specified doors, in any defined area, to be unsecured at a time. Simultaneous requests for access or requests for access while another door is unsecured are denied to maintain the highest level of control.

Access Control Compatible

Any access control system can be used with the 4900 series controllers. The request for access input recognizes any normally open dry contact.

Easy to Install

No software or programming to learn. Controllers are shipped with all operating logic pre-programmed to the customer's specification. Simple connection of door status switches and request-to-access devices are clearly designated in the documentation. Locking devices can be powered from the built-in DC supply or customer's independent low voltage power source. LED visual indicators can be powered or controlled from the relay outputs.

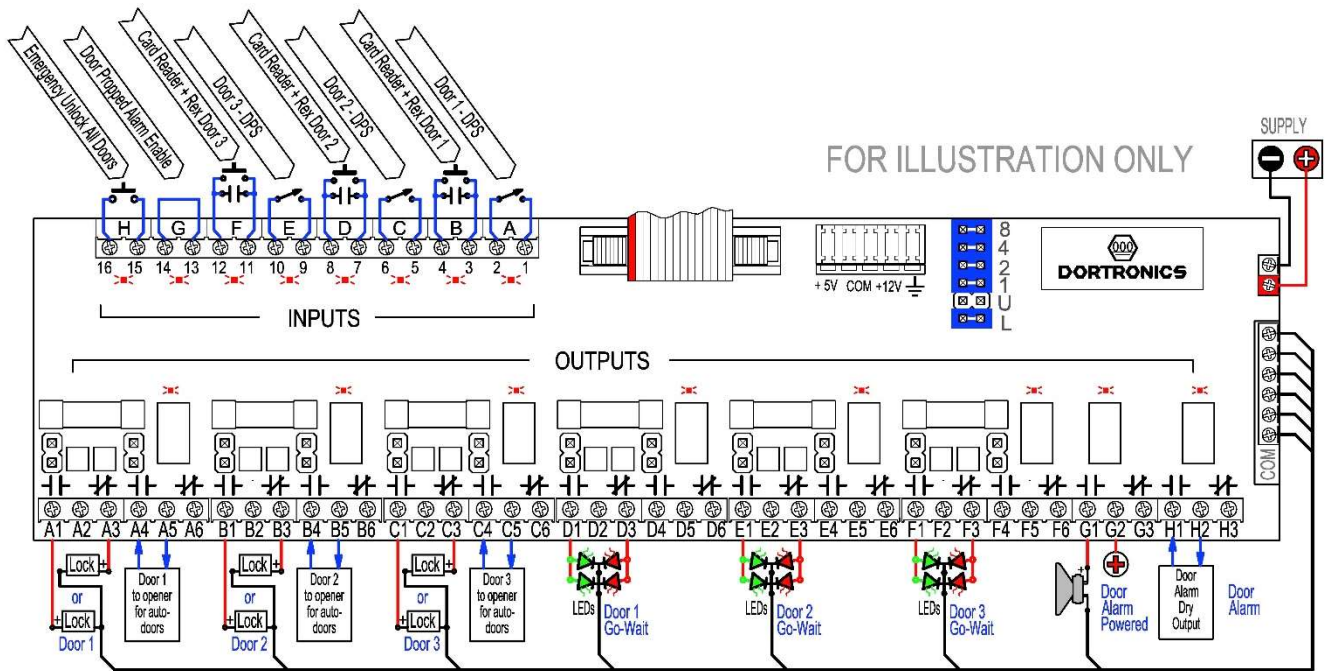
Clean Rooms or Security Mantraps

Suitable for air locks, security mantraps & Sally ports this door interlock system will effectively control normally unlocked doors, normally locked doors or any combination of both. The controller may also be customized to control automatic door openers and provide timing and logic sequences for biological wash-down controls.



4900 Series PLC Door Interlock Specifications

Shown Below #49311-L = 3-Doors/1-Room – All Doors Locked



Physical Dimensions –

4900 PLC & Power Supply with up to two I/O Modules mounted in 13"W x 19.5"H x 4"Deep NEMA-1 Enclosure. Additional I/O modules require larger enclosures

Electrical Specifications –

Power Input = Standard 110 VAC
Built in Power Supply = UL 294
4 Amps @ I2 or 24 Volts DC
6 and 10 Amp power supplies optional.

Configuration –

Inputs - Door Status (Dry contact closed when is door secure)
Request for Access (Dry contact normally open)

Relay Outputs - DPDT Contacts rated 3 Amps @ 28 VDC for each door with TVS Kick Back protection. Magnetic locks or Electric strikes & LED traffic indicators for each door. Door control relays have a fused output.

Mirrored Inputs = Outputs may be programmed to mirror input activity (such as door status switches) for use with other systems

Standard Models –

- #49311-U = 3-Doors/1-Room – All doors Unlocked
- #49311-L = 3-Doors/1-Room – All doors Locked
- #49411-U = 4-Doors/1-Room – All doors Unlocked
- #49411-L = 4-Doors/1-Room – All doors Locked
- #49512-U = 5-Doors/1-Room – All doors Unlocked
- #49512-L = 5-Doors/1-Room – All doors Locked
- #49522-U/1S = 5-Doors/2-Room All doors Normally Unlocked with one shared
- #49612-U = 6-Doors/1-Room – All doors Unlocked
- #49612-L = 6-Doors/1-Room – All doors Locked
- #49622-U/1S = 6-Doors/2-Room All doors Normally Unlocked with one shared

Customized Applications –

Any 4900 PLC Interlock may be customized to the customer's requirements. This also includes special timing functions and logic relative to user actions. Contact factory for a quote on custom programming.



DORTRONICS SYSTEMS, INC.

1668 Sag Harbor Tpke., Sag Harbor, NY 11963 (800) 906-0137 (631) 725-8148 Fax www.dortronics.com