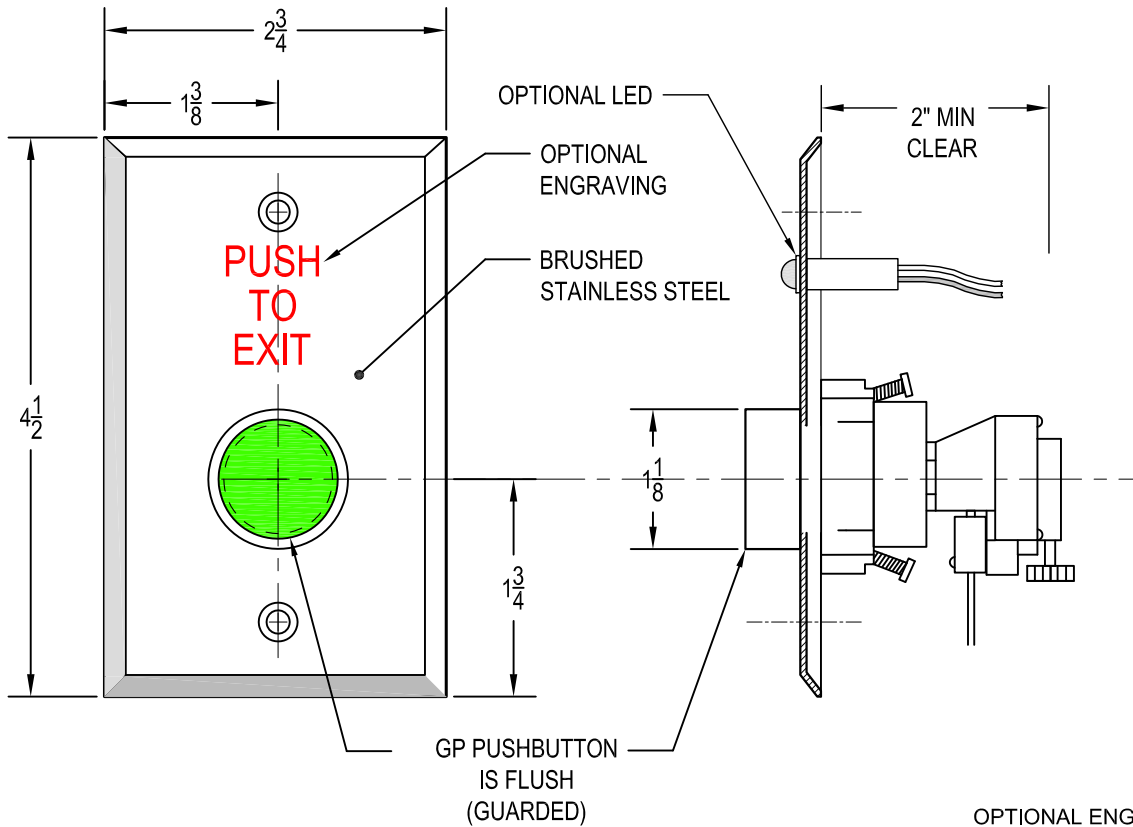


DORTRONICS SYSTEMS, INC.

1668 Sag Harbor Tpke., Sag Harbor, NY 11963 - (800) 906-0137 - (631) 725-8148 Fax - www.dortronics.com

5276-GP23DA SERIES

PNEUMATIC TIME DELAY PUSHBUTTON
1-1/8" DIAMETER
SINGLE GANG PLATE

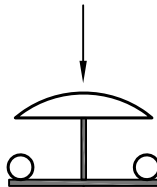


PNEUMATIC
TIME DELAY
PUSH BUTTON

PNEUMATIC
P23DA

ONE SET EACH OF NORMALLY CLOSED
NORMALLY OPEN ISOLATED CONTACTS
8" FLYING LEADS
RED = NORMALLY CLOSED
WHITE=NORMALLY OPEN

RED N.C.



WHITE N.O.

OPTIONAL ENGRAVING:
[RED TEXT]

- XE1 = PUSH TO EXIT
- XE3 = EXIT
- XE4 = DOOR RELEASE
- XE5 = EMERGENCY DOOR RELEASE
- XE6 = CUSTOM ENGRAVING

-XL = OPTIONAL LED
SPECS:

SWITCH RATING: 5211-MP23PP
10A @ 115VAC OR 24VDC
UL RECOGNIZED/CSA CERTIFIED

OPERATING TEMP: +15F - +120F

L.E.D. RATING: .03A @24VDC

FACE PLATE: .032 THICK STAINLESS

OPTIONAL COLOR BUTTONS:
R=RED, BK=BLACK, G=GREEN,