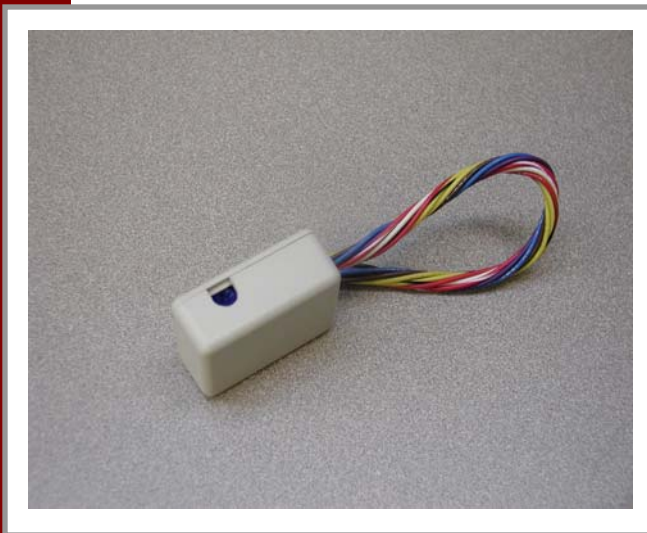


NEW PRODUCT

AT-Timer Ultra-Small Flexible DPDT Time Delay



List Price: \$50.00

AT-Time Delay

12/24 VDC 2 to 60 Second DPDT Timer

FT-Time Delay

12/24 VDC Fixed 30 Second DPDT Timer

Miniature Electronic Time Delay

Dual Voltage / Built-in Spike Protection

This timer will operate on 12 or 24 volts DC, requiring only .025 amps. In addition the unique design protects the timing circuit against spikes and surges produced by strikes and solenoids that maybe operated by this timer.

Fixed or Adjustable Time Delay

The FT timer has a fixed 30-second delay to comply with NFPA/BOCA requirements. The AT version of this timer has field adjustable time delay of 2 to 60 seconds.

Normally Open Isolated or Powered Trigger

The AT and FT timers can be triggered from a normally open dry contact. This timer can also be activated by switching the trigger input to ground (-) for greater flexibility when designing circuits incorporating these units.

DPDT Output

For added utility, both AT and FT timers are supplied with a DPDT relay output rated 3 amps 30VDC/125VAC.

Compact Size

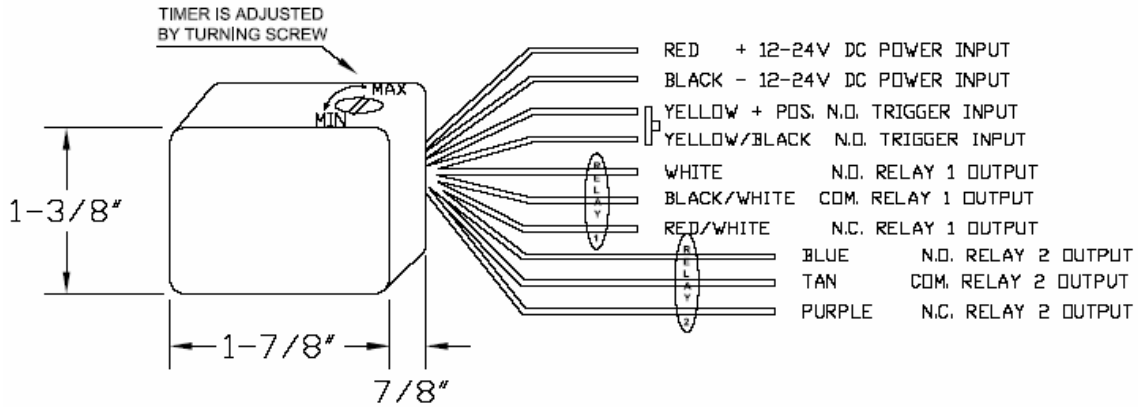
The AT/FT timers are housed in a 1-7/8" x 1-3/8" x 7/8" plastic enclosure that is small enough to fit inside a single gang junction box. Utilizing the flying leads, these timers can be easily added to any momentary actuating switch to change a single output to a DPDT timed output.

DORTRONICS SYSTEMS, INC

1668 Sag Harbor Tpke. – Sag Harbor, NY 11963
(800) 906-0137 - (631) 725-0505 - (631) 725-8148 FAX
WWW.DORTRONICS.COM

AT & FT Timer Applications

Typical Wiring –

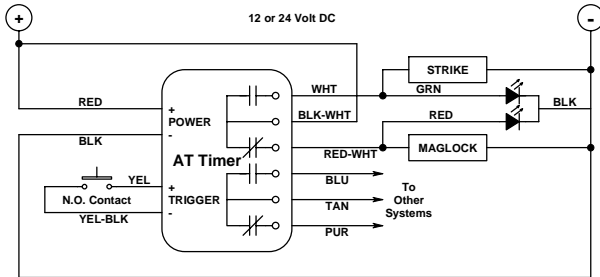


Timer Operation –

Internal DPDT relay is energized upon closure of dry contact on trigger input. Trigger (+) can also be wired to timer ground to initiate a timing cycle. Release of trigger input starts time delay keeping relay energized. Relay is de-energized upon expiration of time delay or loss of timer input power. Reclosure of trigger input before end of time delay will keep relay energized and restart time delay on release of trigger input.

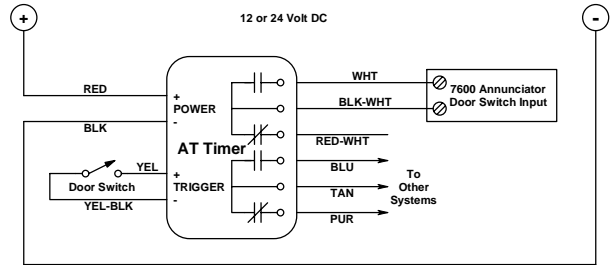
Time Delayed Relock –

Strike or Maglock with Bi-Color LED Indicator



Alarm Shunt –

Time Delayed Alarm Shunt upon Door Open



Door Prop Alarm w/ Key Reset –

Time Delayed Alarm Sounder with LEDs & Shunt/Reset



Fail-Safe Timed Maglock Unlock –

Mechanical Switch Unlock with LEDs & Delayed Relock

