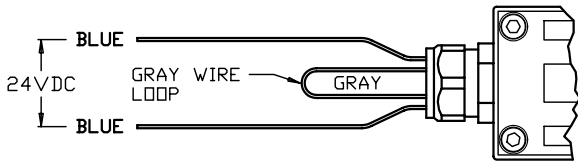


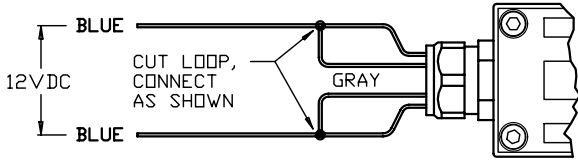
BEFORE INSTALLING, READ MOUNTING INSTRUCTIONS THOROUGHLY!

DUAL VOLTAGE MAGNET:
WIRING DETAIL

24 VOLT CONNECTION (FROM FACTORY)

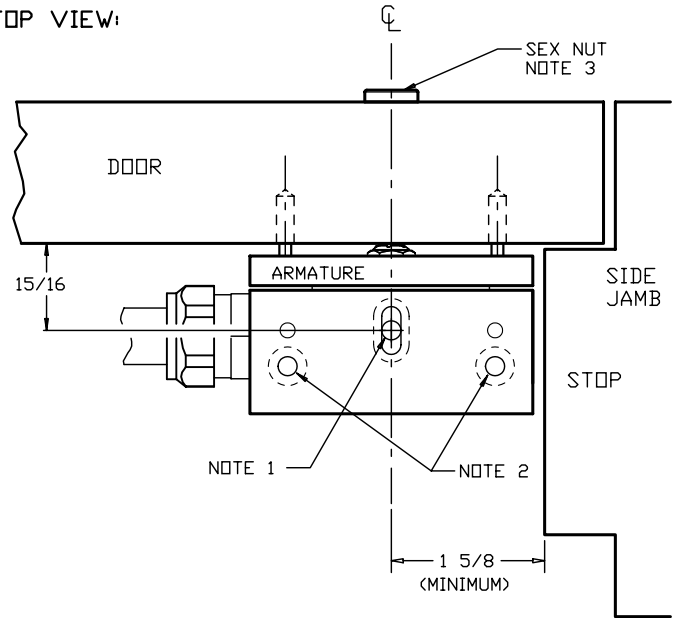


12 VOLT CONNECTION (FIELD MODIFIED)

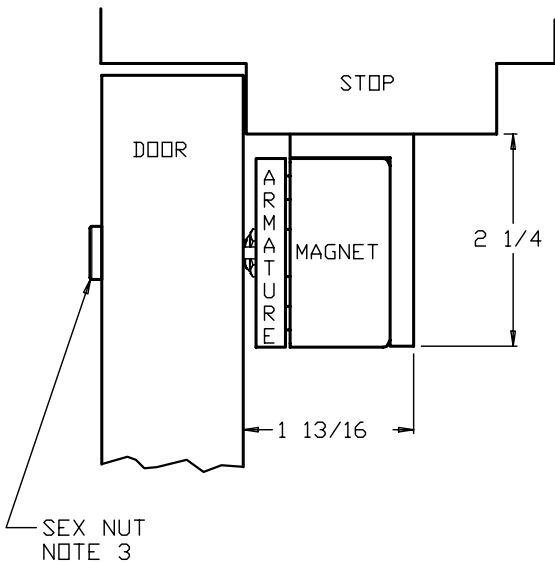


SPECS:
170 mA MAX @ 24VDC
340 mA MAX @ 12VDC

TOP VIEW:



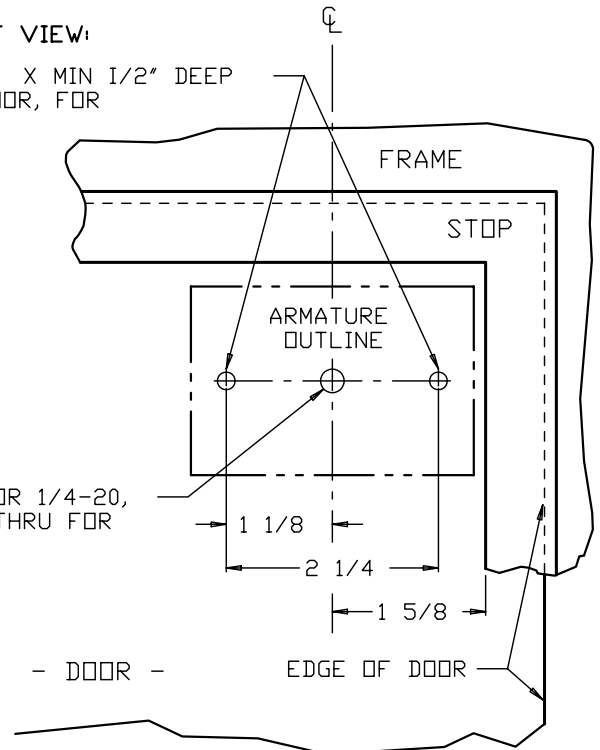
SIDE VIEW:



FRONT VIEW:


DRILL 3/16 DIA X MIN 1/2" DEEP
2 PLACES IN DOOR, FOR
ARMATURE PINS

DRILL & TAP FOR 1/4-20,
OR DRILL 3/8 THRU FOR
SEX NUT



NOTES:

1. DRILL & TAP FRAME FOR 10-32 MACHINE SCREW, OR #10 SHEET METAL SCREW. SLOT PERMITS SOME FLEXIBILITY IN HOLE LOCATION, AND HOLE CAN BE CENTERED UP TO 1 1/16" FROM FACE OF DOOR IF NECESSARY FOR THE FIRMEST MOUNTING LOCATION. ATTACH MOUNTING ANGLE WITH 1 SCREW IN SLOT, LEAVE SLIGHTLY LOOSE FOR ADJUSTMENT, AND TEMPORARILY MOUNT LOCK TO BRACKET USING THE 4 SOCKET HEAD CAP SCREWS & WASHERS.
2. ONLY AFTER LOCK HAS BEEN PROPERLY POSITIONED, USE THE REMAINING 2 HOLES IN THE ANGLE AS A FIXED TEMPLATE TO DRILL & TAP FOR #10-32 MACHINE SCREWS OR #10 SHEET METAL SCREWS IN THE HOLE CENTERS.
3. SEX BOLT FURNISHED IS FOR A 1 3/4" THICK DOOR. IF A SEX BOLT IS REQUIRED FOR OTHER DOOR THICKNESSES, CONSULT FACTORY. IF TAPPING INTO EXISTING METAL DOOR OR CABINET, REINFORCEMENT OF 1/4" MINIMUM THICKNESS IS REQUIRED TO WITHSTAND 300 LB. LOAD.

TITLE MM300 SERIES SURFACE APPLICATION ON SINGLE OUTSWINGING DOOR: MAGNET AND ARMATURE MOUNTING PREPARATION					 DORTRONICS SYSTEMS, INC.					
DRAWN	GSG	DATE	4/15/02	SCALE	TO FIT	CAD FILE	MM300-1 MOUNT	DWG. NO.	TMM300-1	REV. NC
APPR.	XXX	DATE	XX/XX/XX	UNITS	INCHES	SHEET	1 OF 1	SIZE		