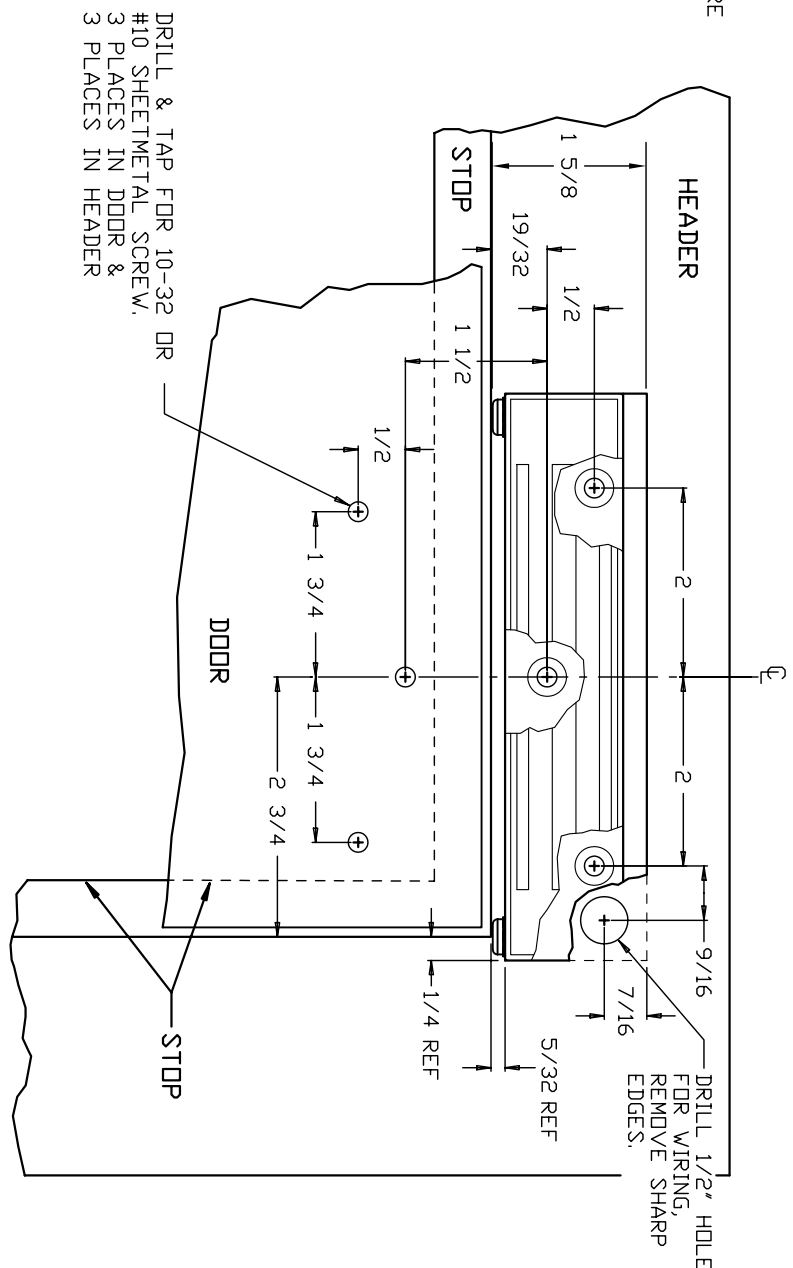
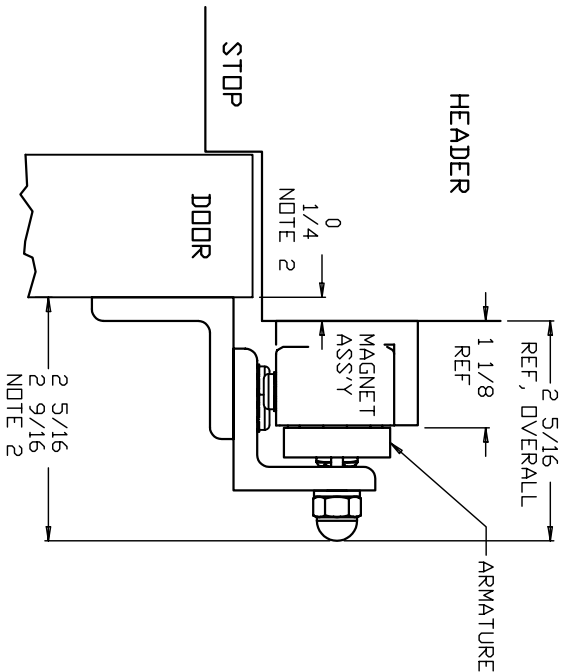


BEFORE INSTALLING, READ MOUNTING INSTRUCTIONS THOROUGHLY!

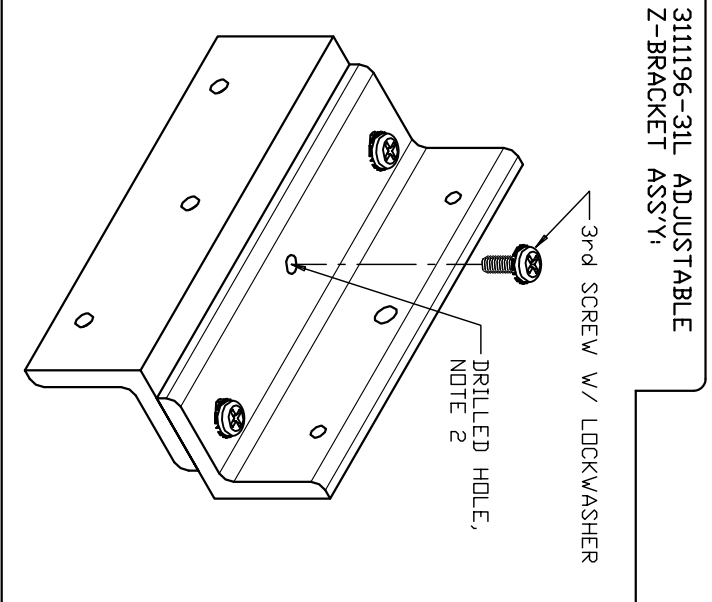


DRILL & TAP FOR 10-32 DR #10 SHEETMETAL SCREW, 3 PLACES IN DOOR & 3 PLACES IN HEADER

NOTES:

1. A TYPICAL OFFSET FROM SIDE JAMB IS SHOWN. MAXIMUM OFFSET IS 3/8", AND WHILE BEST HOLDING FORCE EFFECT IS OBTAINED NEAREST THE DOOR EDGE, THE UNIT MAY BE LOCATED CLOSER IN TO THE HINGE SIDE OF THE DOOR IF NECESSARY FOR A FIRM MOUNTING.
2. ADJUSTABLE Z-BRACKET COMPENSATES FOR VARYING DOOR/FRAME RELIEFS- UP TO 1/4", AFTER DRILLING MOUNTING HOLES AND MOUNTING MAGNET ASS'Y, USE SLOTS IN ADJUSTABLE Z-BRACKET TO OBTAIN PROPER POSITIONING OF ARMATURE THEN USING 3rd TAPPED HOLE, MARK TOP ANGLE, DISASSEMBLE Z-BRACKET, DRILL 13/64 CLEARANCE HOLE FOR 3rd SCREW, AND RE-ASSEMBLE.

WIRING ELECTRICAL SPECS:
 BLUE LEADS 85 mA MAX @ 24VDC
 GRAY LEADS 160 mA MAX @ 12VDC



(NC)	(NC)	
REV.	REVISION DESCRIPTION	DATE

TITLE T JMM300-L TOP JAMB MOUNT WITH 3111196-31L Z-BRACKET ASS'Y FOR INSWINGING DOOR INSTALLATION		DRAWN GSG		DATE 7/2/02		SCALE TO FIT		CAD FILE TTJMM300N-1		DWG. NO. TTJMM300N-1	
APPR.	XXX	DATE	XX/XX/XX	UNITS	INCHES	SHEET	1	DF	1	SIZE	A
											REV. NC